



Sonya® Lush Lash Mascara and Sonya® Brow Fix

SONYA LUSH LASH MASCARA

Your lashes will be magnificent with our exclusive mascara containing Aloe Vera that conditions and lengthens while leaving lashes soft, supple and luxurious. Water resistant, this unique mascara was formulated especially for sensitive eyes.

AVAILABLE IN 2 SHADES:

Black	170
Brown/Black	171

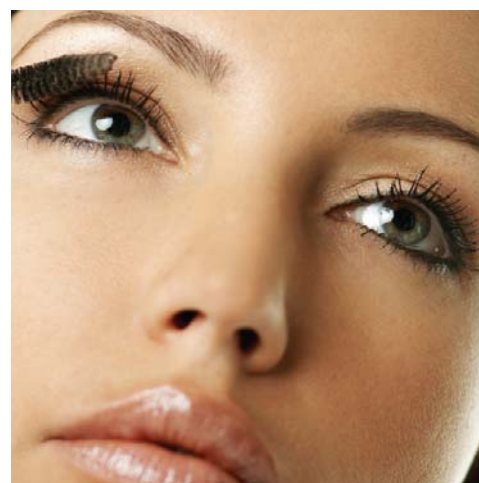
- Never pump your mascara brush up and down in the tube, as it may cause the mascara to dry out.
- 2 light coats are always better than 1 thick coat. Let dry a minute between applications.
- As a general rule, replace your mascara once a month
- Water resistant, ultra-conditioning formula

SONYA BROW FIX

Give your eyebrows a sophisticated look with Sonya Brow Fix. This crystal clear, conditioning formula with Aloe Vera is the perfect way to finish and set your brows.

Brow Fix Clear (172)

- Helps lift and accentuate the brow shape.
- The wand applicator delivers a precise look that keeps its shape all day
- Keeps unruly brows in place



Black 170